

LAYER STACK-UP - ALL DIMENSIONS IN INCHES				
		50ohm SINGLE ENDED IMPEDANCE CONTROL +/- 10%	90ohm DIFFERENTIAL IMPEDANCE CONTROL +/- 10%	100ohm DIFFERENTIAL IMPEDANCE CONTROL +/- 10%
LAYER#	COPPER WEIGHT (oz)	TRACE WIDTH	TRACE WIDTH / SPACE	TRACE WIDTH / SPACE
LAYER 1 - PRIMARY SIDE - SIGNAL	HALF+PLATING	0.0048		
LAYER 2 - GROUND PLANE	H			
LAYER 3 - SIGNAL	H	0.005		0.004/ 0.005
LAYER 4 - GROUND PLANE	H			
LAYER 5 - SIGNAL	H	0.005		0.004/ 0.005
LAYER 6 - GROUND PLANE	H			
LAYER 7 - SIGNAL	H	0.005		0.004/ 0.005
LAYER 8 - GROUND PLANE	H			
LAYER 9 - SPLIT POWER PLANE	H			
LAYER 10 -SPLIT POWER PLANE	H			
LAYER 11 -GROUND PLANE	H			
LAYER 12 -SIGNAL	H	0.005		0.004/ 0.005
LAYER 13 -GROUND PLANE	H			
LAYER 14- SIGNAL	H	0.005		0.004/ 0.005
LAYER 15 -GROUND PLANE	H			
LAYER 16 -SIGNAL	H	0.005		0.004/ 0.005
LAYER 17 -GROUND PLANE	H			
LAYER 18- SECONDARY SIDE - SIGNAL	HALF+PLATING	0.0048		

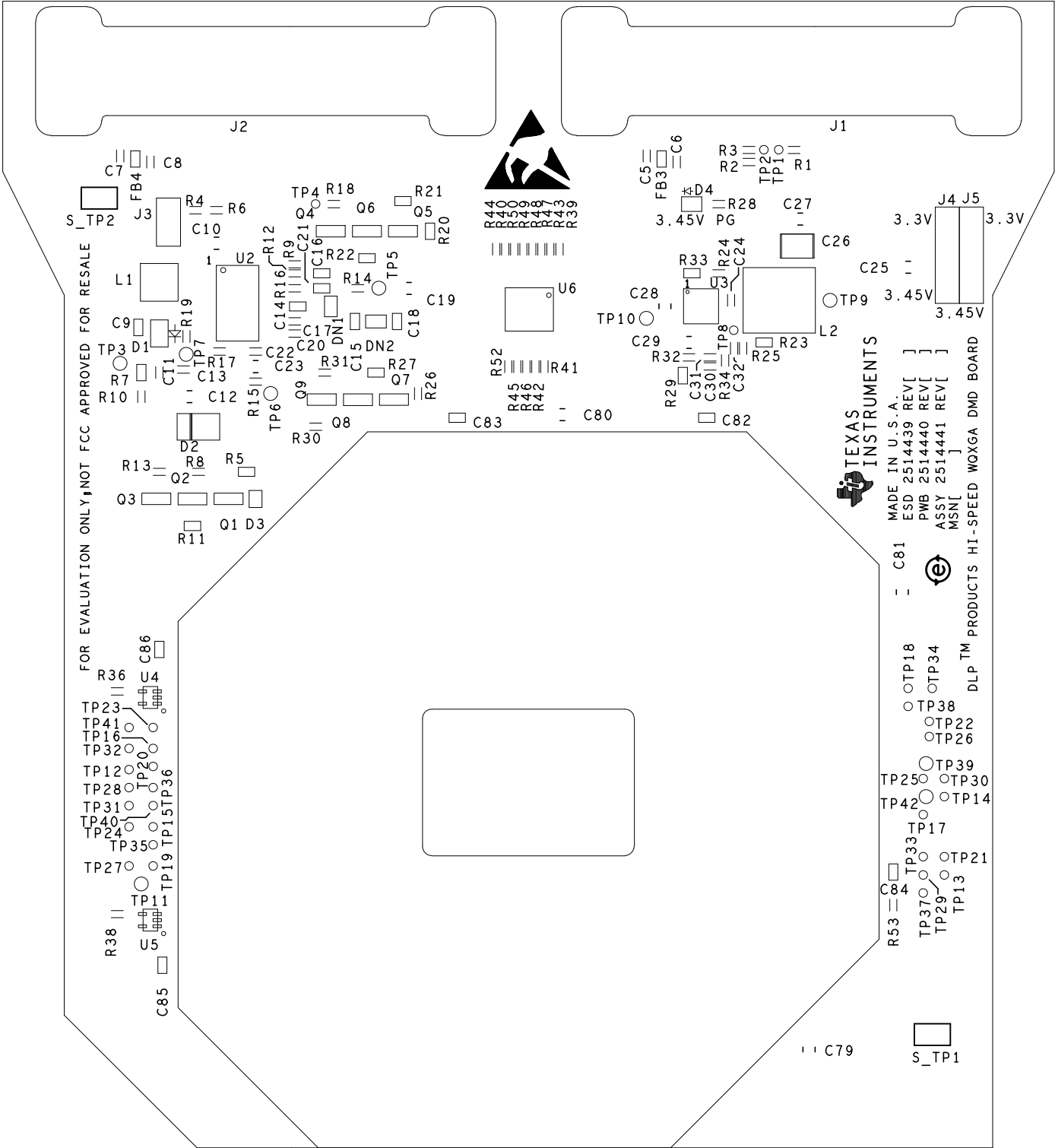
1. ALL DIMENSIONS ARE IN INCHES, UNLESS OTHERWISE NOTED.
2. THE PWB SHALL BE FABRICATED TO IPC-6012, CLASS 2 AND WORKMANSHIP SHALL CONFORM TO IPC-A-600, CLASS 2. CURRENT REVISIONS.
3. BOARD MATERIAL SHALL BE HITACHI MCL-HE-679G OR EQUIVALENT. ROHS COMPLIANT AND LEAD FREE ASSEMBLY CAPABLE. BOARD MATERIAL SHALL MEET OR EXCEED IPC-4101B. COLOR: NATURAL.
4. BOARD MATERIAL & CONSTRUCTION TO BE U.L. APPROVED AND MARKED ON THE FINISHED BOARD.
5. MINIMUM COPPER WALL THICKNESS OF PLATED-THRU HOLES TO BE .001 INCH, WITH A MINIMUM ANNULAR RING OF .002 INCH.
6. OVERALL BOARD THICKNESS TO BE .095 +/- .10% AND APPLIES AFTER ALL LAMINATION AND PLATING PROCESSES, MEASURED FROM COPPER TO COPPER.
7. MAX. WARP & TWIST TO BE .0075 INCHES PER INCH.
8. BOARD MUST BE ELECTRICALLY TESTED USING SUPPLIED IPC-D-356 NETLIST
9. NON-PLATED THROUGH SLOTS INDICATED WITH MULTIPLE DRILL BITS SHOULD BE FINISHED AS SMOOTH WALL BY VENDOR.
10. FABRICATOR SHOULD REMOVE ANY UNUSED PADS ON INTERNAL LAYERS.

1. EXCEPT AS NOTED BELOW, PLATE ALL EXPOSED AREAS WITH ELECTROLESS IMMERSION GOLD, NICKEL 150 MICROINCHES THK MIN GOLD 5-15 MICROINCHES THK MIN.

- 

DRILL CHART: TOP to BOTTOM				
ALL UNITS ARE IN MILS				
FIGURE	SIZE	TOLERANCE	PLATED	QTY
•	10.0	+0.0/-10.0	PLATED	643
•	12.0	+3.0/-3.0	PLATED	355
◆	30.0	+3.0/-3.0	PLATED	9
◻	40.0	+3.0/-3.0	PLATED	10
◈	138.0	+3.0/-3.0	PLATED	4
†	59.0	+2.0/-2.0	NON-PLATED	1
κ	66.0	+3.0/-3.0	NON-PLATED	4
‡	67.0	+2.0/-2.0	NON-PLATED	1
□	79.0	+2.0/-2.0	NON-PLATED	2
B	82.0	+3.0/-3.0	NON-PLATED	2
Z	96.0	+2.0/-2.0	NON-PLATED	2
Z	157.0	+3.0/-3.0	NON-PLATED	4
○	182.0	+3.0/-3.0	NON-PLATED	4

CUSTOMER NAME					TEXAS INSTRUMENTS				
BOARD NAME				DESCRIPTION					
HI SPEED WQXGA DMD BOARD				DRILL DRAWING					
BOARD NO.		REV	DATE	PRJ#	SH		OF		
2514440		B	15-SEP-2015	TIDLP-109680-01	25		25		



CUSTOMER NAME		TEXAS INSTRUMENTS			
BOARD NAME			DESCRIPTION		
HI SPEED WQXGA DMD BOARD			SILKSCREEN - PRIMARY SIDE		
BOARD NO.	2514440	REV	DATE	PRJ#	SH OF
		B	17-SEP-2015	TIDL P-110477-01	21 25

